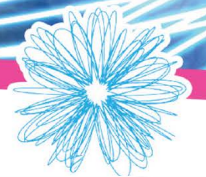


Follow your dream to work with children



CHC50113 DIPLOMA OF EARLY CHILDHOOD EDUCATION & CARE



MCIE
MELBOURNE CITY INSTITUTE
OF EDUCATION

Every MCIE student graduates with the confidence to support children's wellbeing, learning and development. At Diploma level, our students are also taught to design and implement curriculum, as well as supervise volunteers or other staff.

This course provides Early Childhood Educators with the skills and knowledge to design and develop approved learning frameworks to nurture children's learning and growth. Education and Care Services National Regulations require that at least 50% of the educators must have, or be actively working towards an approved Diploma of Early Childhood Education and Care qualification or higher.

Melbourne CBD | Werribee | Industry Leader

CHC50113 DIPLOMA OF EARLY CHILDHOOD EDUCATION & CARE

MCIE also offers:

CHC30113 Certificate III in Early Childhood Education and Care

Course Details

Course Code:	CHC50113
Course Name:	Diploma of Early Childhood Education and Care
Enrolment Fee:	\$229.00
Work Placement Uniform:	\$30
Fee for Service Cost:	\$14,300
Duration:	52 weeks
Work Placement:	240 hours

Career Opportunities

The Diploma of Early Childhood Education and Care is well-suited for individuals looking to embark on a career as a:

- Children Services Coordinator
- Centre Manager
- Director or Educational Leader

Entry Requirements

Candidates must:

- be 18 years or older at time of enrolment
- achieve a satisfactory level of reading, writing, oral communication, learning and numeracy for selection into the course

Pre-Requisites

There are no pre-requisite requirements for this course.

Prior Learning

Recognition of Prior Learning (RPL) and Credit Transfer are available to eligible students. RPL applications are subject to fees. Please see the MCIE website for more details.

Am I Eligible for Funding?

Victorian and Commonwealth Government funded places are available to eligible candidates. Contact MCIE to see if you qualify.

Course Outline

Students must successfully complete 28 units of competency (23 core plus 5 elective units) and undertake 240 hours of mandatory work placement in a regulated early childhood education and care service to gain this qualification.

Delivery and Assessment

This course is delivered face to face one day per week and tutorials are offered a half a day per week. In addition there are 240 mandatory hours of work-placement. Assessment tasks and strategies cover a range of methods including question/answers, practical demonstrations, oral presentations, case studies, and work-placement portfolio tasks.

Core Units

CHCECE002	Ensure the health and safety of children
CHCECE004	Promote and provide healthy food and drinks
HLTAID004	Provide an emergency first aid response in an education and care setting
CHCECE016	Establish and maintain a safe and healthy environment for children
CHCECE019	Facilitate compliance in an education and care services
HLTWHS003	Maintain workplace health and safety
CHCECE017	Foster the holistic development and wellbeing of the child in early childhood
CHCECE018	Nurture creativity in children
CHCECE022	Promote children's agency
CHCECE023	Analyse information to inform learning
CHCECE024	Design and implement the curriculum to foster children's learning and development
CHCECE026	Work in partnership with families to provide appropriate education and care for children
CHCLEG001	Work legally and ethically
CHCPRT001	Identify and respond to children and young people at risk
CHCECE009	Use an approved learning framework to guide practice
CHCECE007	Develop positive and respectful relationships with children
CHCECE003	Provide care for children
CHCECE005	Provide care for babies and toddlers
CHCECE001	Develop cultural competence
CHCDIV002	Promote Aboriginal and/or Torres Strait Islander cultural safety
CHCECE025	Embed sustainable practices in service organisations
CHCECE020	Establish and implement plans for developing cooperative behaviour
CHCECE021	Implement strategies for the inclusion of all children

Elective Units

CHCPRP003	Reflect on and improve own professional practice
CHCMGT003	Lead the work team
CHCPOL002	Develop and implement policy
BSBLED401	Develop team and individuals
CHCDIV001	Work with diverse people



www.mcie.edu.au | 1300 737 004 | info@mcie.edu.au

TRAINING IS DELIVERED WITH VICTORIAN & COMMONWEALTH GOVERNMENT FUNDING. ELIGIBILITY CRITERIA APPLIES

Melbourne City Institute of Education Pty Ltd, as trustee for MCIE Unit Trust
RTO Provider no: 22172 Head Office - Level 5, 250 Collins St Melbourne VIC 3000
Werribee Campus - 1-13 Watton Street, Werribee, VIC, 3030