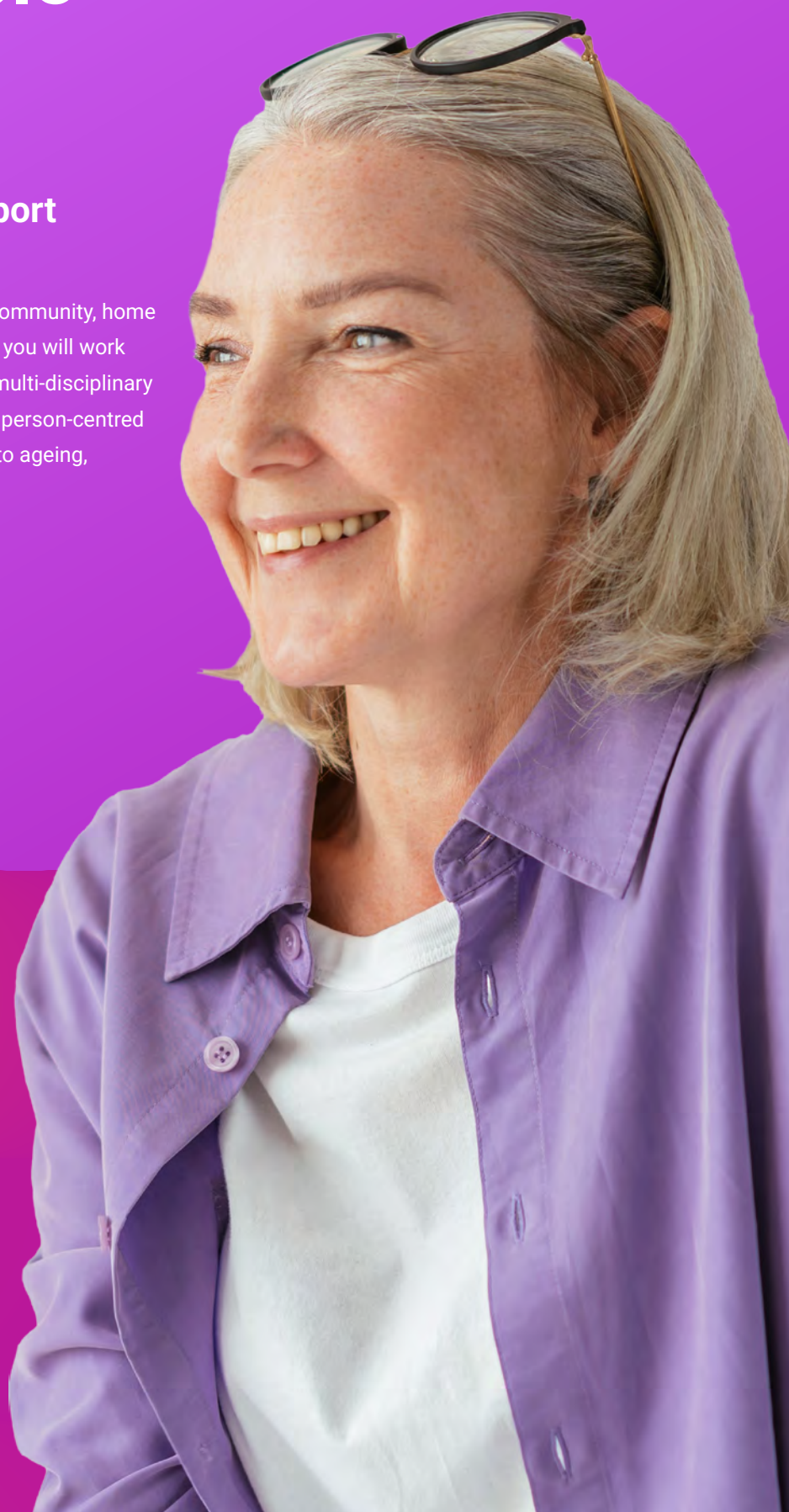


Skilling you to support people in care

Certificate III Individual Support (Ageing & Disability)

Learn to support and care for individuals in the community, home or residential care setting. With this qualification you will work under supervision and delegation as a part of a multi-disciplinary team, following an individualised plan to provide person-centred support to people who may require support due to ageing, disability or some other reason.

CHC33021 | CRICOS Delivery



Employment for **Aged and Disabled Carers** is projected to increase by **28%***

Source: *Jobs and Skills Australia – Employment Projections*



Annual employment growth: 27,300 jobs***

Source: *Jobs and Skills Australia*



Weekly pay: \$1,564 – \$1,761*
Median full-time earnings (before tax)*

Source: *Jobs and Skills Australia / VIC Government*

Certificate III Individual Support (Ageing & Disability)



CHC33021 | CRICOS Delivery

For pricing, job outcomes, further education options, entry & eligibility requirements & all course information, scan the QR code.

Course structure

This qualification consists of 15 units, including 9 core units and 6 elective units.

Delivered over 38 weeks, comprising:

- 28 weeks structured delivery
- 6 weeks work placement (within course duration)
- 4 weeks scheduled breaks

The course is delivered **across 3 terms**, with a sequenced approach to support progression, consolidation and assessment of competency outcomes.

Total course duration may vary in limited circumstances based on individual progression, prior learning or scheduling requirements.

Career pathways

- Personal Carer
- Aged Care Worker
- Accommodation Support Worker
- In-Home Respite Worker

Delivery and assessment

Two days per week of 7.5 hours, totalling 15 hours of scheduled trainer-led delivery

An additional 5 hours per week is allocated to structured learning activities, including tutorials, online learning, and assessment activities via the LMS.

Assessment is conducted using a range of methods to ensure validity and reliability, including case studies, group work, roleplays, written short answer questions, practical demonstrations, and a work-placement portfolio.

Practice-based training activities are undertaken in the workplace. Simulated assessment is only used where workplace assessment is not feasible and is conducted in accordance with training package requirements.

Work placement

Students must complete a minimum of **120 mandatory placement hours** for the work-based training component of this program.

Placement is scheduled within the 6-week placement period and aligned to unit requirements. The Work Placement Coordinator will organise a suitable placement or support students to arrange their own, subject to approval.

Core units

HLTWHS002	Follow safe work practices for direct client care
HLTINF006	Apply basic principles and practices of infection prevention and control
CHCCOM005	Communicate and work in health or community services
CHCLEG001	Work legally and ethically
CHCDIV001	Work with diverse people
CHCCCS031	Provide individualised support
CHCCCS038	Facilitate the empowerment of people receiving support
CHCCCS040	Support independence and wellbeing
CHCCCS041	Recognise healthy body systems

Elective units

CHCAGE011	Provide support to people living with dementia
CHCAGE013	Work effectively in aged care
CHCPAL003	Deliver care services using a palliative approach
CHCDIS011	Contribute to ongoing skills development using a strengths-based approach
CHCDIS012	Support community participation and social inclusion
CHCDIS020	Work effectively in disability support

Elective units have been selected based on industry consultation and workforce needs.

Pre-requisites

There are no formal entry requirements for this qualification.

Entry requirements include that students must:

- be 18 years or over at course commencement
- have completed studies equivalent to Australian Year 11 or higher
- demonstrate English language proficiency (IELTS 6.0 or equivalent)
- undertake a pre-training review and suitability assessment
- demonstrate adequate digital literacy skills

To participate in work placement, students must meet placement requirements, which may include:

- National Police Check
- NDIS Worker Screening Check (where required)
- Working With Children Check (where required)
- Evidence of vaccinations or other host employer requirements

Locations

Classes are conducted at Level 8/250 Collins Street, Melbourne.

- ▶ **Job Readiness program** available at the time of enrolment - Start studying whilst seeking work in the Aged Care sector
- ▶ **Get employed:** Recognised qualification for entry level jobs in the Community Care sector



More information: Call 1300 737 004 or visit our website at www.mcie.edu.au, or email us at info@mcie.edu.au

Melbourne City Institute of Education Pty Ltd, as trustee for MCIE Unit Trust. • RTO Provider no: 22172 • Level 8, 250 Collins Street, Melbourne VIC 3000